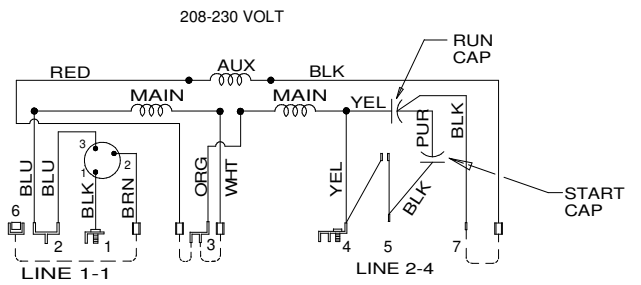
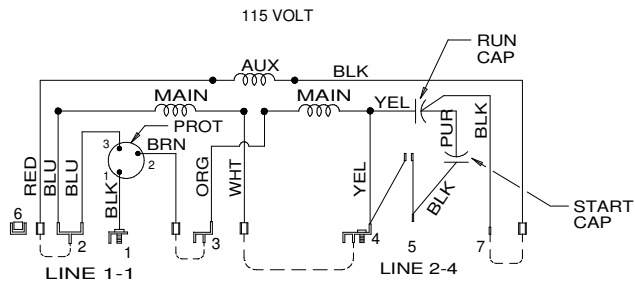


MODEL	REF	CUSTOMER	HP	VOLTS	AMPS	HZ	RPM	ROTATION	CUSTOMER PN	
T55CXTJN-1239		STANDARD	3/4	115/208-230	8.2/4.7-4.2	60	1725	CW SWITCH END, REV	3261	
SHEET NUMBER	REV	REVISION RECORD FOR: C6408-00			INFORMATION DISCLOSED ON THIS DOCUMENT IS CONSIDERED PROPRIETARY AND SHALL NOT BE REPRODUCED OR DISCLOSED WITHOUT WRITTEN CONSENT OF NIDEC MOTOR CORPORATION				NIDEC MOTOR CORPORATION	
1 OF 2	C	UPDATED "ENGINEER APPROVED" TO B. GAITAN.								
REVISION DATE	12-OCT-12									
ISSUED BY				REVIEWED BY		ENGINEER APPROVED		ALL DIMENSIONS ARE FOR REFERENCE ONLY UNLESS TOLERANCE IS GIVEN		
E. VICENCIO				M. LARGENT		B. GAITAN		TITLE		SIZE
NIDEC MOTOR CORPORATION 12-Oct-12								ASSEMBLED VIEW		B
								CODE		ITEM NO.
								V01		737106

V01\_NMCB (MAR.2011)

SOLIDEDGE



TO REVERSE ROTATION INTERCHANGE RED & BLK LEADS

MODEL	REF	CUSTOMER	HP	VOLTS	AMPS	HZ	RPM	ROTATION	CUSTOMER PN		
T55CXTJN-1239		STANDARD	3/4	115/208-230	8.2/4.7-4.2	60	1725	CW SWITCH END, REV	%CustPtno		
SHEET NUMBER 2 of 2	REV C	REVISION RECORD FOR: C6408-00 UPDATED "ENGINEER APPROVED" TO B. GAITAN.			INFORMATION DISCLOSED ON THIS DOCUMENT IS CONSIDERED PROPRIETARY AND SHALL NOT BE REPRODUCED OR DISCLOSED WITHOUT WRITTEN CONSENT OF NIDEC MOTOR CORPORATION				<b>NIDEC MOTOR CORPORATION</b> <small>ALL DIMENSIONS ARE FOR REFERENCE ONLY UNLESS TOLERANCE IS GIVEN</small>		
REVISION DATE 12-OCT-12					TITLE ASSEMBLED VIEW						CODE V01
ISSUED BY E. VICENCIO	REVIEWED BY M. LARGENT	ENGINEER APPROVED B. GAITAN									

NIDEC MOTOR CORPORATION 12-Oct-12

V01\_NMCB (MAR 2011)

SOLIDEDGE