

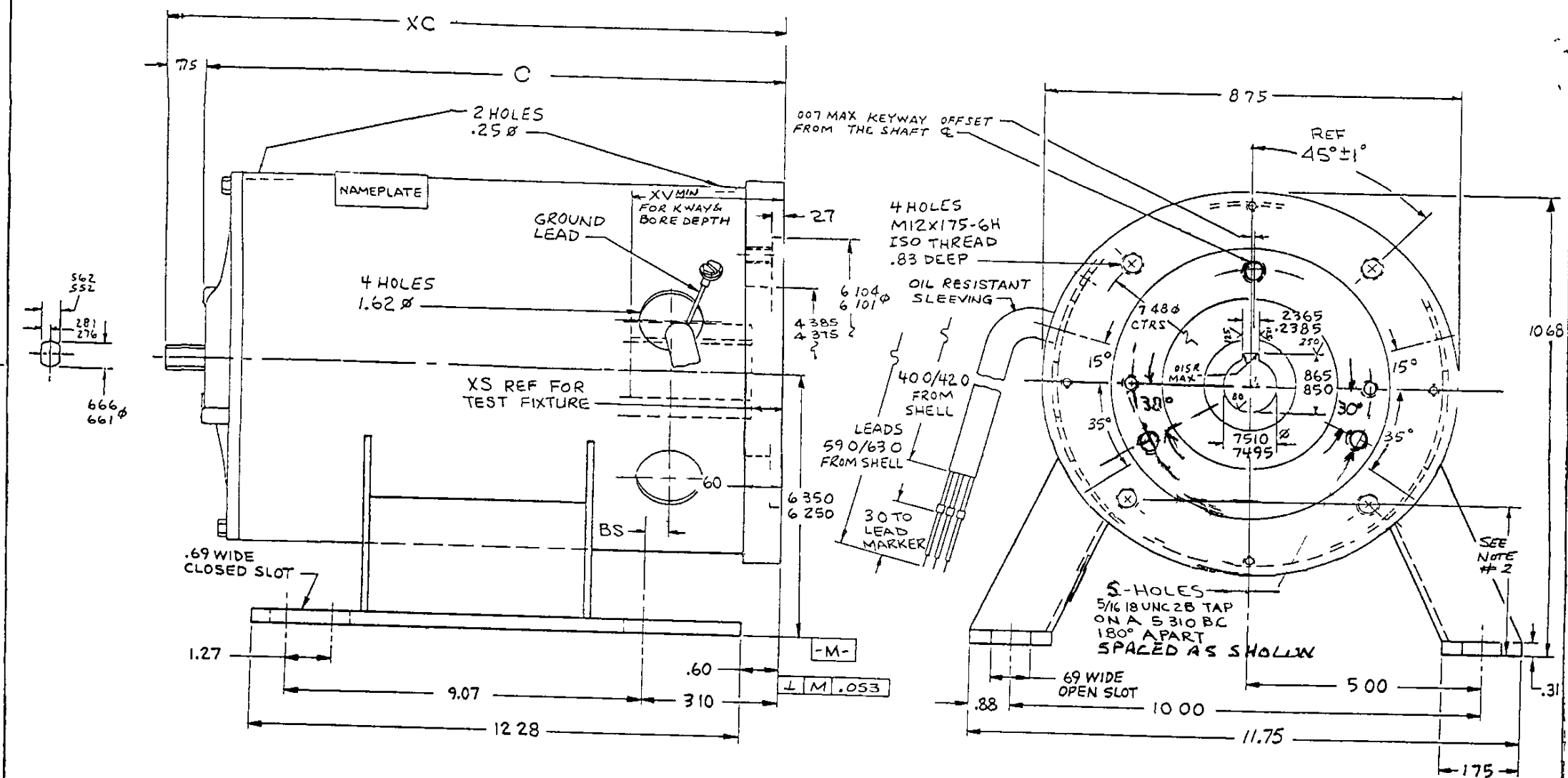
D/GR	REFERENCE	C	BS	XC	XS	XV	SPEC
S No	TYPE FRAME FLOPM						
4 01	CX M182TY S	12 05	.94	12 30	1 18	2 56 (3,5,7 1/2 HP)	59745
4 02	SC M184TY S	12 05	.94	12 30	1 18	2 56 (5,7 1/2 10 HP)	59756
4 03	CX Y182TY S	12 55	.94	13 30	1 18	2 56 (10 HP)	59745

DO NOT SCALE DRAWING

NOTE 1) FOR USE WITH IMO PUMP SERIES E45 SIZE 025, 032 & 038 MOUNTED ON FLANGE 131672 SUPPLIED BY CUSTOMER

2) TWO BOTTOM CUSTOMER MOUNTING HOLES ON A 7.48" Ø BOLT CIRCLE TO BE EQUIDISTANT FROM PLANE FORMED BY BOTTOM OF BASE WITHIN .089"

3) MOTOR THRU-BOLTS MUST NOT EXTEND THROUGH ADAPTER PLATE.



SIM TO 359486

Ø = DIA

31 ADDED 3 MTG HOLES  
PER ECN 00M16884.  
TW/Jmw 2-23-00

REV	DATE	BY	CHKD	APPD
1	7/16/06			
2	4/30/06			
3	4/30/06			
4	4/30/06			
5	4/30/06			
6	4/30/06			
7	4/30/06			
8	4/30/06			
9	4/30/06			
10	4/30/06			
11	4/30/06			
12	4/30/06			
13	4/30/06			
14	4/30/06			
15	4/30/06			
16	4/30/06			
17	4/30/06			
18	4/30/06			
19	4/30/06			
20	4/30/06			
21	4/30/06			
22	4/30/06			
23	4/30/06			
24	4/30/06			
25	4/30/06			
26	4/30/06			
27	4/30/06			
28	4/30/06			
29	4/30/06			
30	4/30/06			
31	4/30/06			
32	4/30/06			
33	4/30/06			
34	4/30/06			
35	4/30/06			
36	4/30/06			
37	4/30/06			
38	4/30/06			
39	4/30/06			
40	4/30/06			
41	4/30/06			
42	4/30/06			
43	4/30/06			
44	4/30/06			
45	4/30/06			
46	4/30/06			
47	4/30/06			
48	4/30/06			
49	4/30/06			
50	4/30/06			
51	4/30/06			
52	4/30/06			
53	4/30/06			
54	4/30/06			
55	4/30/06			
56	4/30/06			
57	4/30/06			
58	4/30/06			
59	4/30/06			
60	4/30/06			
61	4/30/06			
62	4/30/06			
63	4/30/06			
64	4/30/06			
65	4/30/06			
66	4/30/06			
67	4/30/06			
68	4/30/06			
69	4/30/06			
70	4/30/06			
71	4/30/06			
72	4/30/06			
73	4/30/06			
74	4/30/06			
75	4/30/06			
76	4/30/06			
77	4/30/06			
78	4/30/06			
79	4/30/06			
80	4/30/06			
81	4/30/06			
82	4/30/06			
83	4/30/06			
84	4/30/06			
85	4/30/06			
86	4/30/06			
87	4/30/06			
88	4/30/06			
89	4/30/06			
90	4/30/06			
91	4/30/06			
92	4/30/06			
93	4/30/06			
94	4/30/06			
95	4/30/06			
96	4/30/06			
97	4/30/06			
98	4/30/06			
99	4/30/06			
100	4/30/06			

TH RD  
ANGLE  
PROJECTIONCentury Electric, Inc.  
1831 Chestnut Street, St. Louis, Missouri 63103

CENTURY

1801 DWG 0 LINE BB OPEN  
SPECIAL FACE MTG & BASED W E CRO JUF ON CORR ON NO  
77-88 7/19/88  
APPD NONE

5 359924 c 1920

DATE: 12/11/2014

2) This Bottom Customer Mounting Hole On A 748p Bar Chisel  
To Be Equidistant From Flank Failure By Bottom Of Bar

3) MOTOR THRU-BOLTS MUST NOT EXTEND THROUGH ADAPTER PLATE



4- EN

TIME	DATE	NAME	ROOM NO.	REMARKS
		1807 DWG. G LINE BA OPEN SPECIAL FACI MTG & BASE		
		5	957924	C