

PRODUCT INFORMATION PACKET

Model No: 3S053

Catalog No: 3S053

OEM Replacement Motor, 1 HP, 1 Ph, 60 Hz, 208-230 V, 1620 RPM, 1 Speed, 48 Frame, OAO



Regal and are trademarks of Regal Rexnord Corporation or one of its affiliated companies.
©2022 Regal Rexnord Corporation, All Rights Reserved. MC017097E

Nameplate Specifications

Output HP	1 Hp	Output KW	0.75 kW
Frequency	60 Hz	Voltage	208-230 V
Current	4.90 A	Speed	1620 rpm
Service Factor	1	Phase	1
Duty	Continuous Air Over	Insulation Class	B
Frame	48	Enclosure	Open Air Over
Thermal Protection	Thermally Protected	Ambient Temperature	40 °C
UL	Recognized	CSA	Y
CE	N	Number of Speeds	1

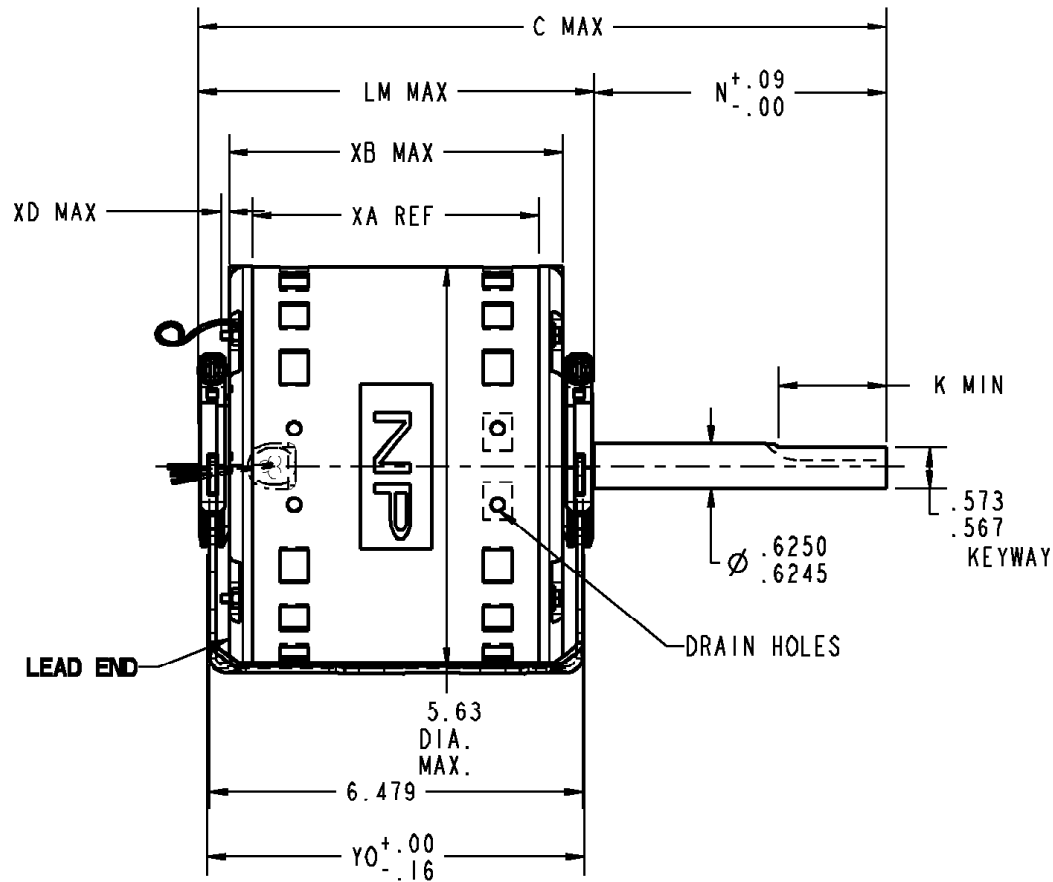
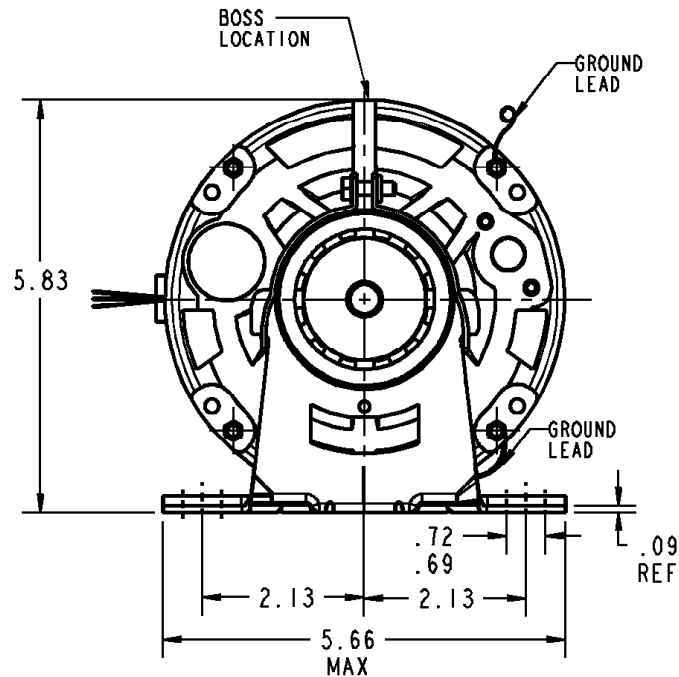
Technical Specifications

Electrical Type	Permanent Split Capacitor	Poles	4
Rotation	Clockwise	Mounting	Resilient Base
Motor Orientation	Any	Drive End Bearing	Ball
Opp Drive End Bearing	Ball	Frame Material	Rolled Steel
Shaft Type	Keyed	Overall Length	9.14 in
Frame Length	5.32 in	Shaft Diameter	0.620 in
Shaft Extension	2.25 in		
Outline Drawing	5KCP39PGWB12S	Connection Drawing	NP24X327056

This is an uncontrolled document once printed or downloaded and is subject to change without notice. Date Created:09/15/2022

NAME: 100020344 OBJECT: 5KCP39PGWB12S DATE: 14-Sep-11 15:40:19

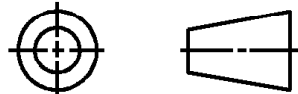
VENTILATION SYSTEM		RBC PROPRIETARY AND CONFIDENTIAL INFORMATION This document is the property of REGAL BELOIT CORPORATION ("RBC") including its subsidiaries and divisions and contains proprietary information of RBC. This document is loaned on the express condition that neither it nor the information contained therein shall be disclosed to others without the express written consent of RBC, and that the information shall be used by the recipient only as approved expressly by RBC. This document shall be returned to RBC upon its request. This document may be subject to certain restrictions under U.S. export control laws and regulations.	REVISIONS			
SHELL VENTS	OPEN		REV.	DESCRIPTION	DATE	APPROVED
ENDSHIELD (OPP. LEAD END)	OPEN		1	CHANGED CPN	11/18/11	NELDA
ENDSHIELD (LEAD END)	OPEN					



NOTE:
1. DIMENSIONS SHOWN ARE NOMINAL UNLESS/OTHERWISE SPECIFIED.


N/A	N/A	N/A	N/A	N/A	N/A	.14	6.640
ZH	ZS	XO	XE	XF	XC	XD	YO
9.14	2.25	1.86	N/A	N/A	6.81	5.32	5.98
C	N	K	XN	XK	LM	XA	XB

THIRD ANGLE PROJECTION



SNO	CONNECTION	COLOR	EXT TYPE	EXT LOC (MEMO LB)	QANTY	MATERIAL	WALL THK	LENGTH	TERMINATION
1	COMMON LEAD	YELLOW	2-3 LD BUSHING	9:00	18	EPDM	2/64	52.00	.25 SOC
2	CAPACITOR LEAD	BROWN	2-3 LD BUSHING	9:00	18	EPDM	2/64	52.00	.25 SOC
3	HIGH SPEED LEAD	BLACK	2-3 LD BUSHING	9:00	18	EPDM	2/64	52.00	.25 MALE ISOC
4	GROUND	GRN-YEL	CLAMPSCREW	1:30	18	THERMOPLASTIC	2/64	12.00	#10 EYELET PREM

NAMEPLATE DATA	
MODEL	5KCP39PGWB12S
CUST P/N	STOCK NO 3S053
HP	1
RPM	1620
VOLTS	208-230
HZ	60
SPEEDS	1
AMPS	4.90
CAP REQD-1	15.00µfd/370Volts
CAP REQD-2	N/R
CONN. DRW	NP24X327056
ROTATION	CW (VIEWED FROM LE)



REGAL-BELOIT CORPORATION
FORTWAYNE, INDIANA

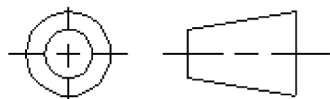
TITLE
MOTOR OUTLINE
(CUSTOMER NAME : DEF PUR)

SIZE B DRAWING 5KCP39PGWB12S REV 1

SCALE: NO ISSUED: 9/14/11 SHEET 1 of 1

THIRD ANGLE PROJECTION

REVISIONS



REV

DESCRIPTION

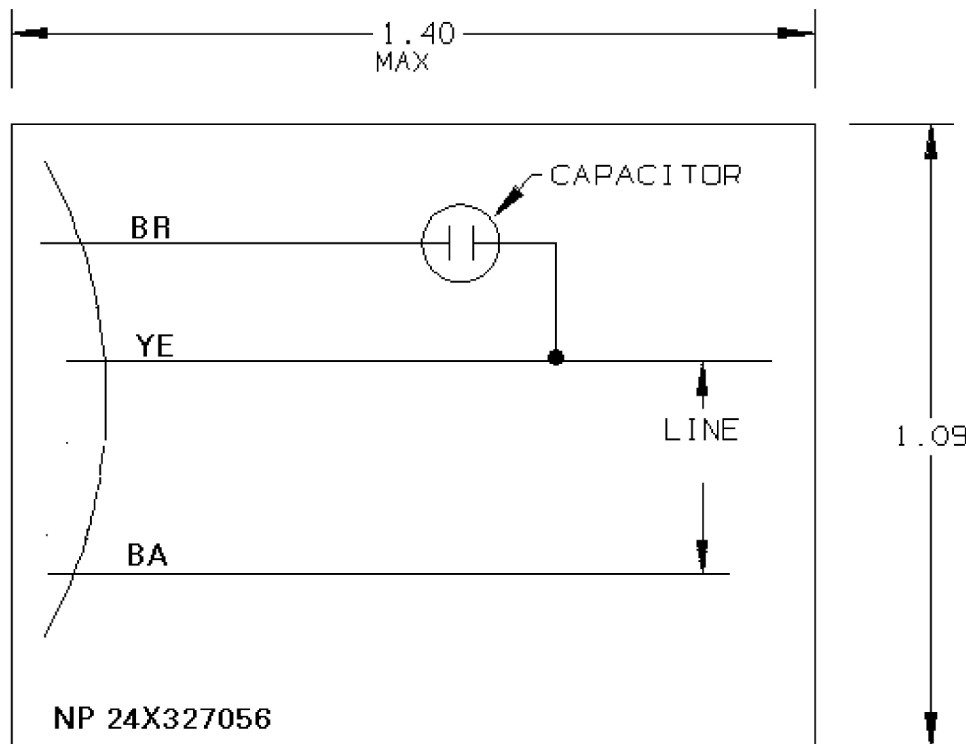
DATE

APPROVED

1 CAS 2/11/99 ELECTRONIC FORMAT

CONFIDENTIAL AND PROPRIETARY

This document is the property of General Electric Company and contains proprietary and confidential information of the Motor Business Group (MBG). The document is loaned on the express conditions that neither it nor the information contained therein shall be disclosed to others without the express consent of MBG and that the information shall be used by the recipient only as approved expressly by MBG. Also, the document shall be returned to MBG upon its request.



NOTE: THIS DRAWING WILL BE ELECTRONICALLY REPRODUCED BY THE HVAC FAN MOTOR NAMEPLATE SYSTEM.

UNLESS OTHERWISE SPECIFIED

SIGNATURES

DATE

DIMENSIONS ARE IN INCHES

DRAWN RL UETRECHT

4/3/1972

TOLERANCES ON:

2 PL DECIMALS ±

3 PL DECIMALS ±

ANGLES ±

FRACTIONS ±

MATERIAL:

CAD NO

SIZE

FSCM NO

DWG NO

NP 24X327056

APPLIED PRACTICES:

SCALE

3

SHEET

1 OF 1