

PRODUCT INFORMATION PACKET

Model No: 048A11T201

Catalog No: X304

Fan and Blower Motor, 0.33 HP, 1 Ph, 60 Hz, 115 V, 1200 RPM, 48Y Frame, TEAO



Regal and are trademarks of Regal Rexnord Corporation or one of its affiliated companies.
©2022 Regal Rexnord Corporation, All Rights Reserved. MC017097E

Nameplate Specifications

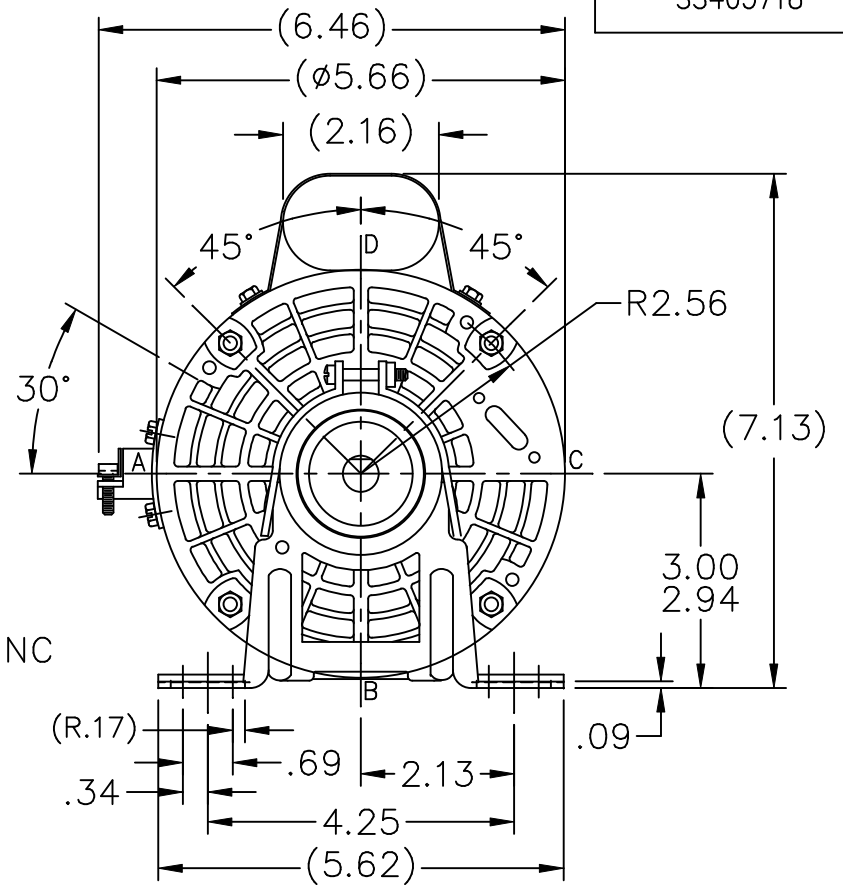
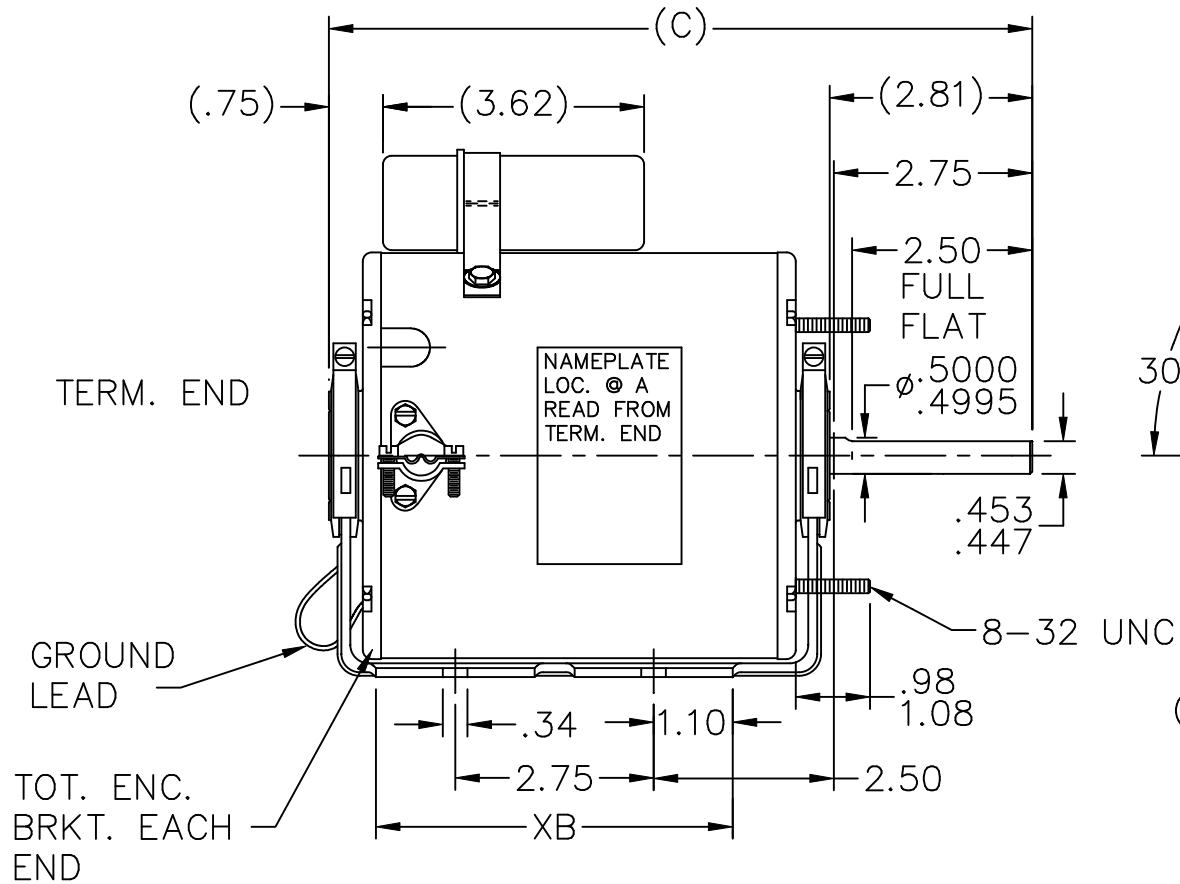
Output HP	0.33 Hp	Output KW	0.25 kW
Frequency	60 Hz	Voltage	115 V
Current	6.5 A	Speed	1075 rpm
Service Factor	1	Phase	1
Efficiency	70 %	Power Factor	70
Duty	Continuous	Insulation Class	B
Design Code	NO DESIGN CODE	KVA Code	F
Frame	48Y	Enclosure	Totally Enclosed Air Over
Thermal Protection	Automatic	Ambient Temperature	40 °C
Drive End Bearing Size	6203	Opp Drive End Bearing Size	6203
UL	Recognized	CSA	Y
CE	N	IP Code	43
Number of Speeds	1		

Technical Specifications

Electrical Type	Permanent Split Capacitor	Starting Method	Across The Line
Poles	6	Rotation	Selective Counterclockwise
Resistance Main	0 Ohms	Mounting	Resilient Base - Extended Studs
Motor Orientation	Horizontal	Drive End Bearing	Ball
Opp Drive End Bearing	Ball	Frame Material	Rolled Steel
Shaft Type	Single Special Extension	Overall Length	9.75 in
Frame Length	5.50 in	Shaft Diameter	0.500 in
Shaft Extension	2.81 in	Assembly/Box Mounting	F1 ONLY
Outline Drawing	A-SS403718-550	Connection Drawing	9513130

This is an uncontrolled document once printed or downloaded and is subject to change without notice. Date Created:09/15/2022

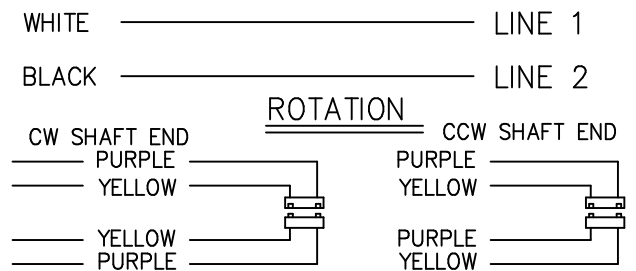
SS403718



DASH	C	XB
550	9.75	4.94

LEAD DESCRIPTION:

1 BLACK AND 1 WHITE LEAD WITH .50 BARE WIRE STRIP EXIT MOTOR THROUGH CONDUIT CONNECTOR WITH ADJUSTABLE THROAT OPENING. 35.00" - 37.00" LONG. PURPLE AND YELLOW REVERSING LEADS MOLDED INTO MATING PULL- APART PLUGS. 4.00-6.00" LONG.



NO.	REVISION	BY & DATE	CHK	TOLERANCES UNLESS SPECIFIED	
				DEC.	INCHES
				.X	\pm .1
				.XX	\pm .03
				.XXX	\pm .005
				.XXXX	\pm .0005
				ANG	\pm 7'30"



TITLE OUTLINE
48 FRAME

MAT'L.

FINISH

DRAWN	GRB	05-15-2008
CHK	SP	05-15-2008
APPD	SP	05-15-2008
SCALE	3=8	
REF	SS74134	
FMF		
PREV		

THIS DRAWING IN DESIGN AND DETAIL IS OUR PROPERTY AND MUST NOT BE USED EXCEPT IN CONNECTION WITH OUR WORK ALL RIGHTS OF DESIGN AND INVENTION ARE RESERVED THIS IS AN ELECTRONICALLY GENERATED DOCUMENT - DO NOT SCALE THIS PRINT

RFP 05-15-2008

DIST WP

CAD FILE ss403718

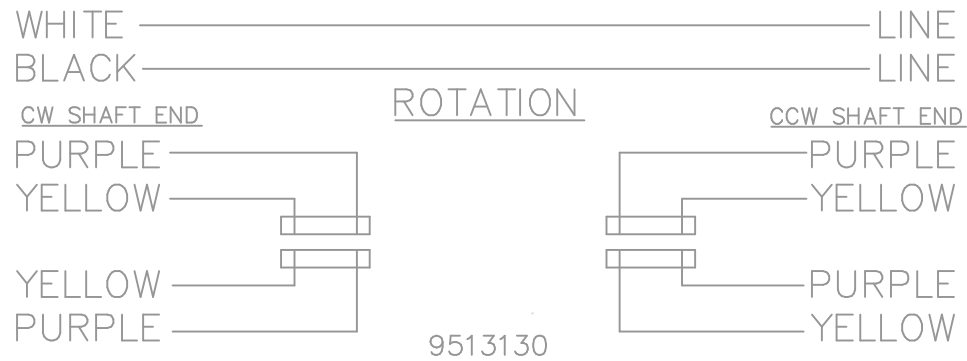
SIZE


A

DRAWING NO. PAGE OF

SS403718

REV.



				TOLERANCES UNLESS SPECIFIED		REGAL-BELOIT 	DRAWN TOM 09/19/1988				
				DEC.	INCHES		CHK				
				.X	±.1		APPD MS 09/20/1988				
				.XX	±.02		SCALE 1=1				
				.XXX	±.005		REF				
3	REDRAWN IN AUTOCAD	JMS 03/11/2005		.XXX	±.005	TITLE CONNETION DIAGRAM		FMF			
2	NEW DRAWING	TOM 09/19/1988		.XXXX	±.0005	MAT'L.		PREV			
NO.	REVISION	BY & DATE	CHK	ANG	± 7'30"	FINISH					
THIS DRAWING IN DESIGN AND DETAIL IS OUR PROPERTY AND MUST NOT BE USED EXCEPT IN CONNECTION WITH OUR WORK ALL RIGHTS OF DESIGN AND INVENTION ARE RESERVED THIS IS AN ELECTRONICALLY GENERATED DOCUMENT – DO NOT SCALE THIS PRINT			RFP		CAD FILE 9513130			SIZE	DRAWING NO.	PAGE OF	REV.
			DIST WP					A	9513130		3

CERTIFICATION DATA SHEET

Model#: 48A11T201 K
 CONN. DIAGRAM: 9513130
 OUTLINE: A-SS403718-550

WINDING#: PE486176 NONE 1
 ASSEMBLY: F1 ONLY

TYPICAL MOTOR PERFORMANCE DATA

HP	KW	SYNC. RPM	F.L. RPM	FRAME	ENCLOSURE	KVA CODE	DESIGN
1/3	0.25	1200	1075	48Z	TEAO	F	NO DESIGN CODE

PH	Hz	VOLTS	FL AMPS	START TYPE	DUTY	INSL	S.F	AMB°C	ELEVATION
1	60	115	6.5	ACROSS THE LINE	CONTINUOUS	B3	1.0	40	3300

FULL LOAD EFF: 70	3/4 LOAD EFF: 67.6	1/2 LOAD EFF: 61	GTD. EFF	ELEC. TYPE	NO LOAD AMPS
FULL LOAD PF: 70	3/4 LOAD PF: 63	1/2 LOAD PF: 52.5	0	PSC 1 SPEED	2.9

F.L. TORQUE	LOCKED ROTOR AMPS	L.R. TORQUE	B.D. TORQUE	F.L. RISE°C
24.5 LB-FT	15.9	9.21 LB-FT -	50.5 LB-FT -	0

SOUND PRESSURE @ 3 FT.	SOUND POWER	ROTOR WK^2	MAX. WK^2	SAFE STALL TIME	STARTS /HOUR	APPROX. MOTOR WGT
- dBA	- dBA	0 LB-FT^2	- LB-FT^2	- SEC.	-	0 LBS.

*** SUPPLEMENTAL INFORMATION ***

DE BRACKET TYPE	ODE BRACKET TYPE	MOUNT TYPE	ORIENTATION	SEVERE DUTY	HAZARDOUS LOCATION	DRIP COVER	SCREENS	PAINT
STANDARD	STANDARD	RESILIENT BASE-EXTENDED STUDS	HORIZONTAL	FALSE	NONE	FALSE	NONE	GRAY (POWDER)

BEARINGS		GREASE	SHAFT TYPE	SPECIAL DE	SPECIAL ODE	SHAFT MATERIAL	FRAME MATERIAL
DE	OPE						
BALL	BALL	BEACON 325	SGL SPL EXT	0.500 x 2.75 IN SEF WITH 2.50 IN FULL FLAT	NONE	1144 STRESSPROOF (C-223)	ROLLED STEEL
6203	6203						

THERMO-PROTECTORS				THERMISTORS	CONTROL	SPACE /n HEATERS
THERMOSTATS	PROTECTORS	WDG RTDs	BRG RTDs			
NONE	AUT LCK RTR ONLY	NONE	NONE	NONE	FALSE	NONE VOLTS

If Inverter equals NONE, contact factory for further information

* N O T E S *	INVERTER TORQUE: NONE					
	INV. HP SPEED RANGE: NONE					
	ENCODER: NONE					
	NONE NONE					
	NONE NONE PPR					
	BRAKE: NONE NONE					
	NONE P/N NONE					
	NONE NONE					
	NONE FT-LB	NONE V	NONE Hz			

DATE: 06/27/2017 06:31:40 AM
 FORM 3531 REV.3 02/07/99

** Subject to change without notice.


MARATHON ELECTRIC CORPORATION

TYPICAL PERFORMANCE CURVE for AC MOTOR

Customer

Curve at

115

Volts

 HP 0.33

 PHASE 1

 Model No 48A11T201
60

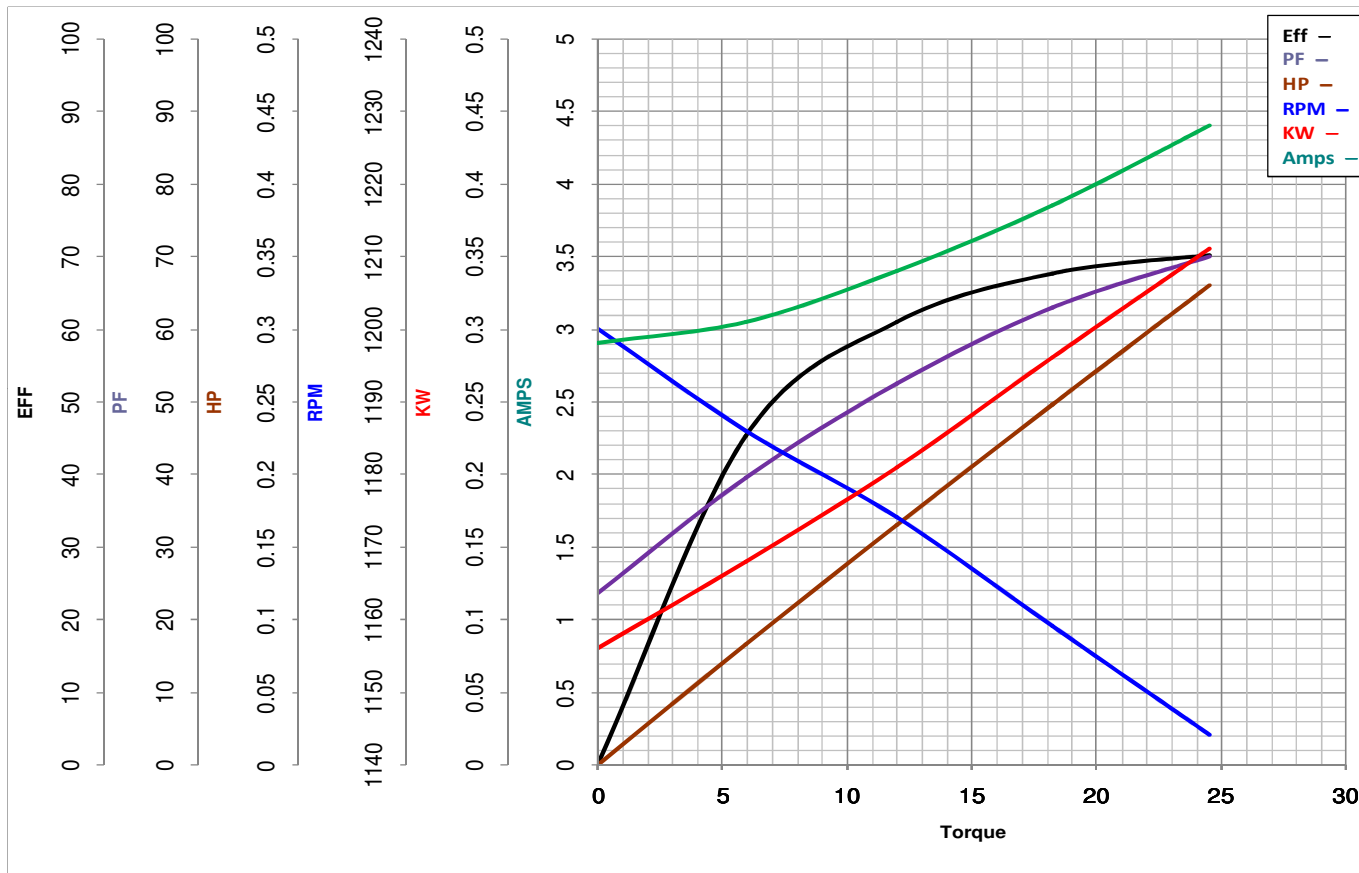
HZ

 VOLTS 115
0.33

HP

 HZ 60

 RPM 1075

 Catalog No X304


Torque in Oz.Ft

 FL TORQUE 24.5 Oz.Ft

 BD TORQUE 50.5 Oz.Ft

 LR TORQUE 9.21 Oz.Ft

 FL AMPS 6.5

 PU TORQUE 8.3 Oz.Ft

 LR AMPS 15.9

WINDING PE486176-1

Date 1/4/2019