

# PRODUCT INFORMATION PACKET

Model No: B387

Catalog No: B387

Air Compressor Motor, 6.0 HP, 1 Ph, 60 Hz, 230 V, 3600 RPM, R56Y Frame, DP



Regal and are trademarks of Regal Rexnord Corporation or one of its affiliated companies.  
©2022 Regal Rexnord Corporation, All Rights Reserved. MC017097E

### Nameplate Specifications

Output HP	6.0 Hp	Output KW	4.5 kW
Frequency	60 Hz	Voltage	230 V
Current	24.0 A	Speed	3450 rpm
Service Factor	1	Phase	1
Duty	Continuous	Insulation Class	F
Frame	R56Y	Enclosure	Drip Proof
Thermal Protection	Thermally Protected	Ambient Temperature	40 °C
UL	Recognized	CSA	N
CE	N	Number of Speeds	1

### Technical Specifications

Electrical Type	Capacitor Start, Capacitor Run, Single Or Dual Voltage	Starting Method	Across The Line
Poles	2	Rotation	Clockwise
Mounting	Rigid Base	Drive End Bearing	Ball
Opp Drive End Bearing	Ball	Frame Material	Rolled Steel
Shaft Type	Keyed	Overall Length	14.56 in
Frame Length	8.75 in	Shaft Diameter	0.875 in
Shaft Extension	2.31 in		
Outline Drawing	183807-S01	Connection Drawing	18359401

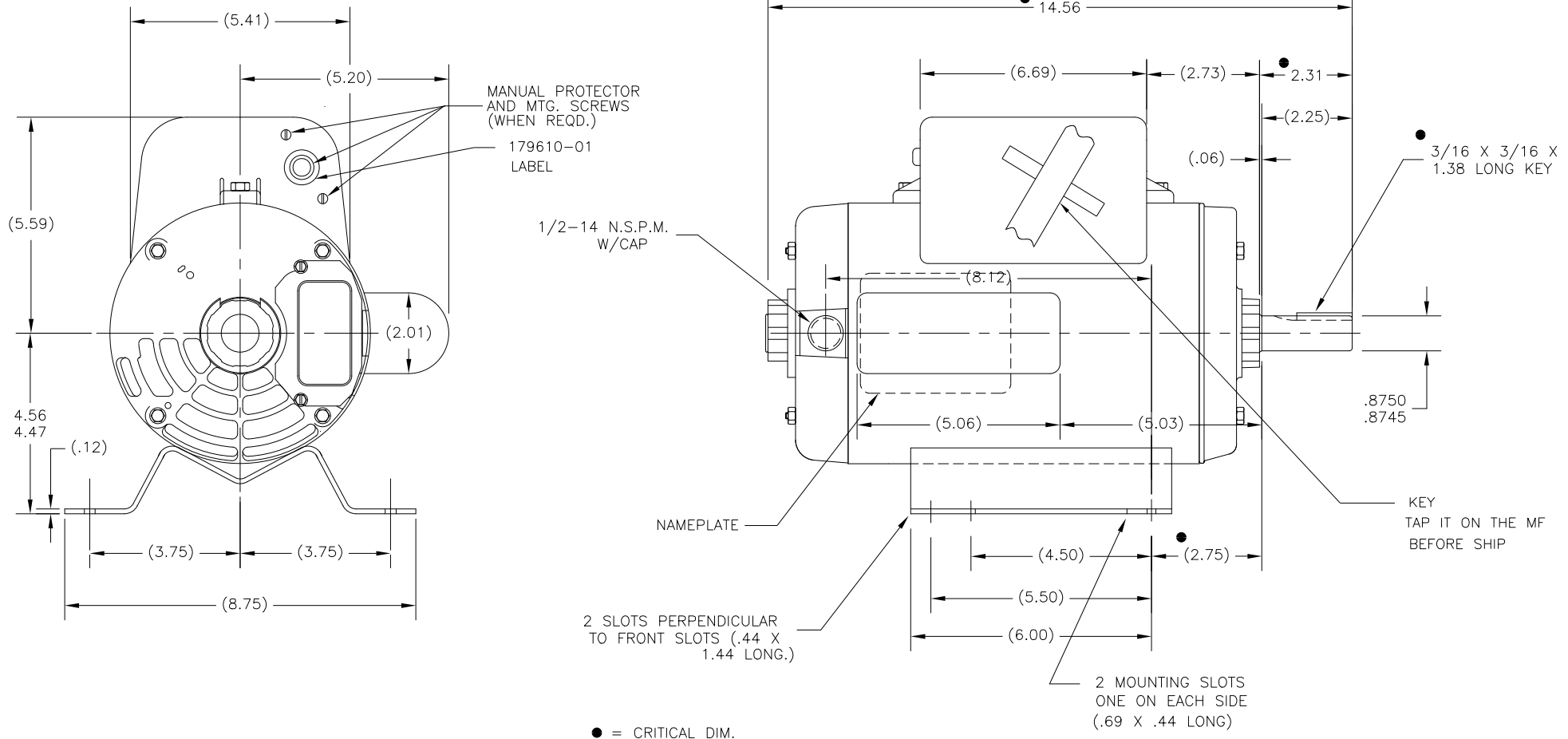
This is an uncontrolled document once printed or downloaded and is subject to change without notice. Date Created:09/07/2022

## NOTE:

TERMINAL BOX TO BE LOCATED  
AT 12:00 WITHIN  $\pm 1\ 1/2^\circ$

ALL DIMENSIONS SHOWN IN PARENTHESIS  
ARE REFERENCE DIMENSIONS. ALL  
OTHER DIMENSIONS ARE TOLERANCED PER  
THE FOLLOWING CHART UNLESS  
OTHERWISE SPECIFIED.

"C" DIM. =  $\pm .055$   
SHAFT EXT. =  $\pm .034$   
LEAD LENGTHS =  $\pm 1.00$   
EXTENDED  
THRU-BOLTS =  $\pm .050$   
ANGULAR DIMS. =  $\pm 2$  DEGS.



DRAWING REVISION		REVISION BY	DATE	TOLERANCES UNLESS OTHERWISE SPECIFIED		DRAWN BY:		Regal Beloit America, Inc.	
E		KHADHAR	01/07/2022	DEC. INCH mm ANGLE		BARPEA		DATE: 11/10/1993	
ECO		APPROVED BY	DS	X ±0.1 [±2.5] ±0.5°		APPROVED BY:		DESCRIPTION	
ECO-0214794		DS	01/07/2022	XX ±0.02 [±0.51] ±0.5°		DATE:		MODEL-CFHP-56FR	
ECO DESCRIPTION		ADDED KEY AND HP LABEL		XXX ±0.005 [±0.127] ±0.5°		REFERENCE		MATERIAL	
COPYRIGHT REGAL BELOIT AMERICA, INC. ALL RIGHTS RESERVED.		PROPRIETARY AND CONFIDENTIAL INFORMATION - THIS DOCUMENT IS THE PROPERTY OF REGAL BELOIT AMERICA, INC. (OWNER) AND CONTAINS OWNER'S PROPRIETARY INFORMATION. ANY PERSON, CORPORATION OR OTHER FIRM RECEIVING IT IS DEMAND, BY RECEIVING IT, TO AGREE THAT IT, AND/OR ANY PART OF IT, SHALL NOT BE DISCLOSED TO ANY PERSON, CORPORATION OR OTHER ENTITY, DUPLICATED, AND/OR USED, EXCEPT AS EXPRESSLY APPROVED IN WRITING IN ADVANCE BY OWNER. THIS DOCUMENT SHALL BE RETURNED TO OWNER UPON REQUEST. IT MAY BE SUBJECT TO CERTAIN RESTRICTIONS UNDER APPLICABLE EXPORT CONTROL LAWS AND REGULATIONS.		REMOVE BURRS & BREAK SHARP EDGES .003/.015 [0.076/.381] X 45° CORNER FILLETS R.02 [5.1] MACHINED SURFACES		THIRD ANGLE PROJECTION		SIZE DWG NO	
				INCH mm		C		183807	
				mm SHOWN IN PARENTHESES				SHEET 1	