

PRODUCT INFORMATION PACKET



Model No: E114214.00

Catalog No: E114214.00

.1 1/2HP..3450RPM.56.DP.115/230V.1PH.60HZ.CONT.40C.1.15SF.RIGID C.....GENERAL PURPOSE.MANUAL.....

General Purpose Motors



Regal and Leeson are trademarks of Regal Rexnord Corporation or one of its affiliated companies.

©2021 Regal Rexnord Corporation, All Rights Reserved. MC017097E





Nameplate Specifications

| | | | |
|------------------------|------------|----------------------------|------------|
| Output HP | 1.50 Hp | Output KW | 1.1 kW |
| Frequency | 60 Hz | Voltage | 115/230 V |
| Current | 12.2/6.1 A | Speed | 3450 rpm |
| Service Factor | 1.15 | Phase | 1 |
| Efficiency | 81.5 % | Power Factor | 97.3 |
| Duty | Continuous | Insulation Class | B |
| Design Code | L | KVA Code | J |
| Frame | 56C | Enclosure | Drip Proof |
| Thermal Protection | Manual | Ambient Temperature | 40 °C |
| Drive End Bearing Size | 6203 | Opp Drive End Bearing Size | 6203 |
| UL | Recognized | CSA | Y |
| CE | N | IP Code | 22 |
| Number of Speeds | 1 | | |

Technical Specifications

| | | | |
|-----------------------|-------------------------------|-----------------------|----------------------------|
| Electrical Type | Capacitor Start Capacitor Run | Starting Method | Across The Line |
| Poles | 2 | Rotation | Selective Counterclockwise |
| Resistance Main | 0 Ohms | Mounting | Rigid Base |
| Motor Orientation | Horizontal | Drive End Bearing | Ball |
| Opp Drive End Bearing | Ball | Frame Material | Rolled Steel |
| Shaft Type | NEMA 56 | Overall Length | 12.37 in |
| Frame Length | 7.50 in | Shaft Diameter | 0.625 in |
| Shaft Extension | 1.88 in | Assembly/Box Mounting | F1 ONLY |
| Outline Drawing | 607-0375-750C | Connection Drawing | 005053.01 |

4

3

Uncontrolled Copy

2

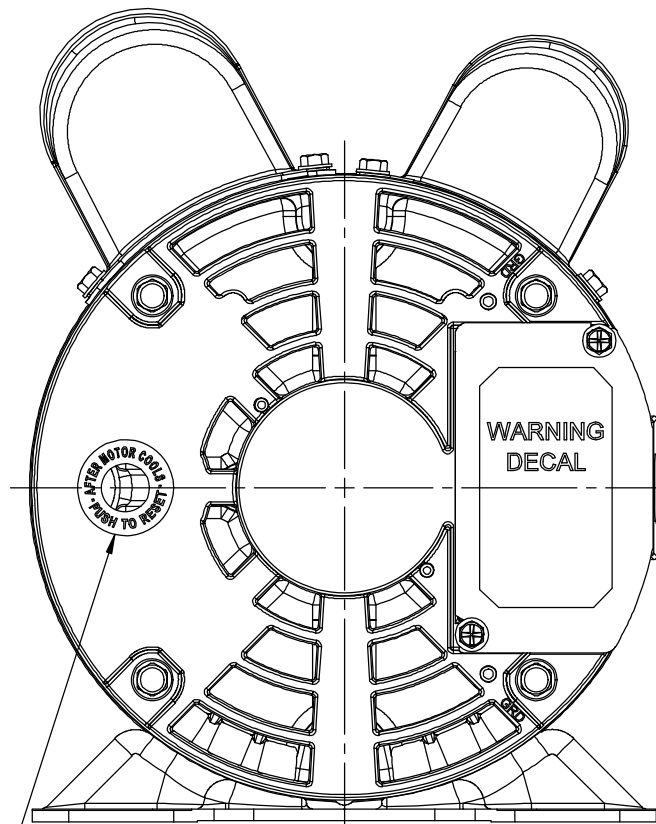
1

B

B

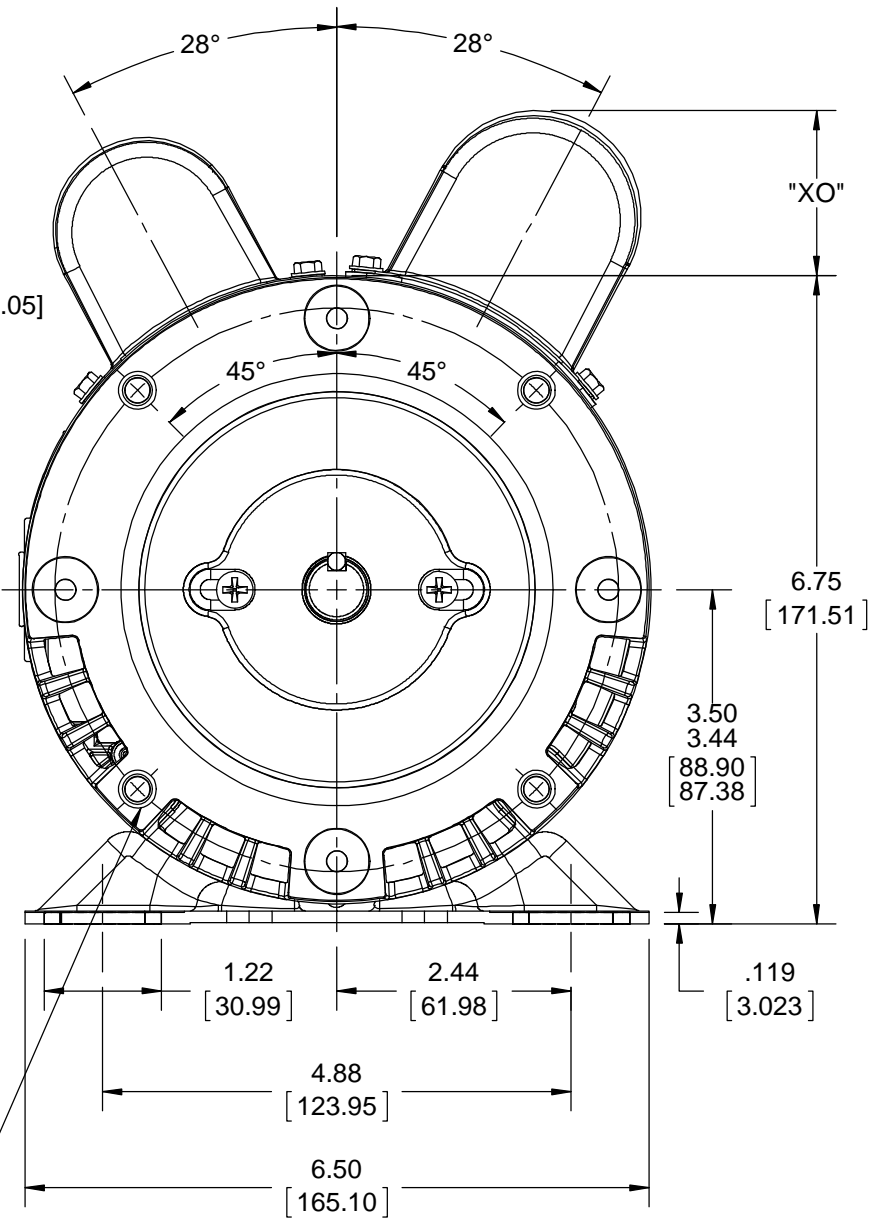
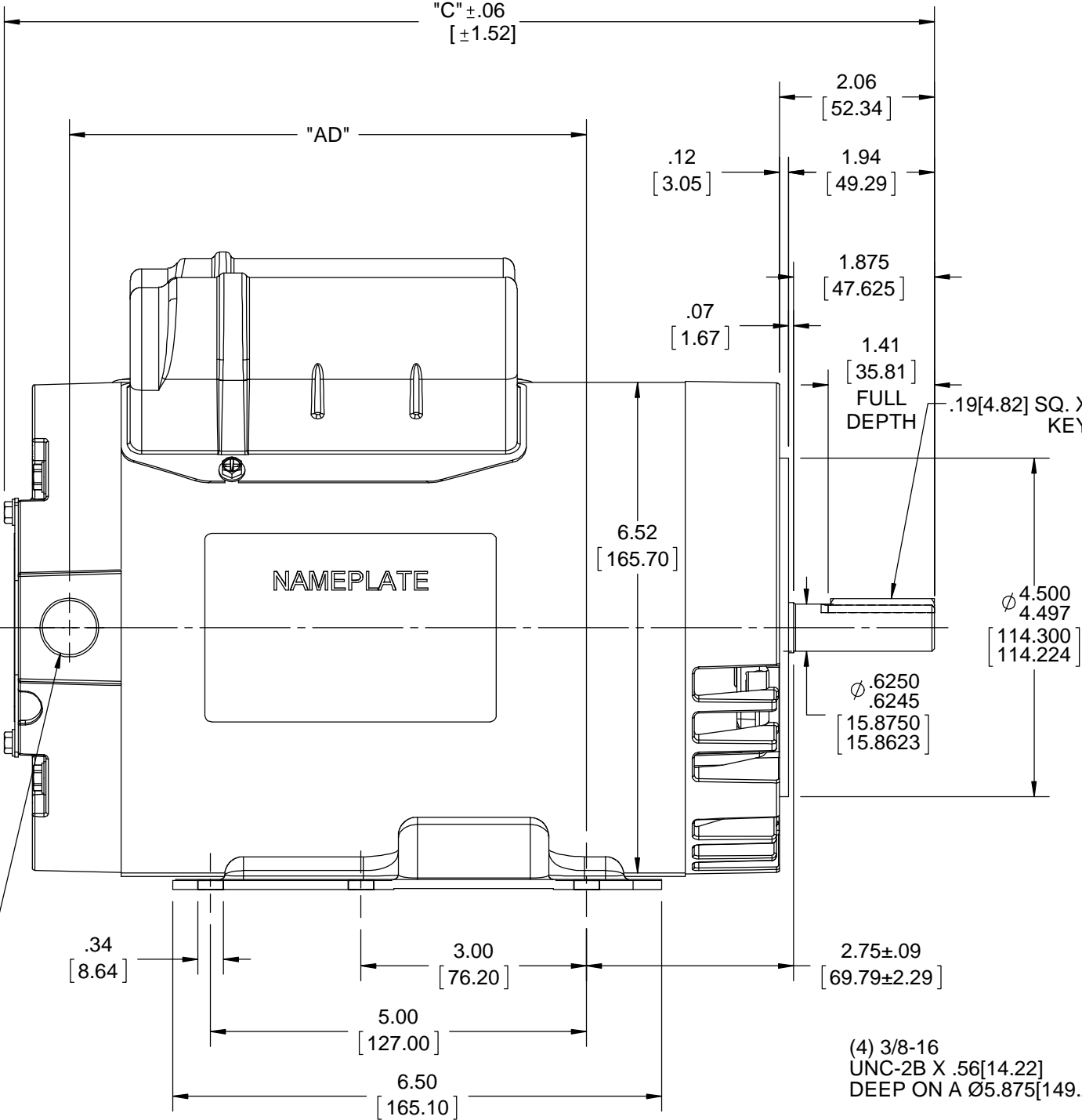
A

A



DECAL MANUAL PROTECTOR

(1) 1/2-14 NPT (PLUGGED)



MAXIMUM FACE RUNOUT TO BE .004 T.I.R.
MAXIMUM PILOT ECCENTRICITY .004 T.I.R.
PERMISSIBLE SHAFT RUNOUT .002 T.I.R.

| DASH NO. | "C" | "AD" | CAP DASH | "XO" |
|----------|---------------|--------------|----------|-------------|
| 750 | 12.37[314.19] | 6.88[174.75] | A | 1.15[39.37] |
| | | | B | 1.44[36.57] |
| | | | C | 1.72[43.68] |

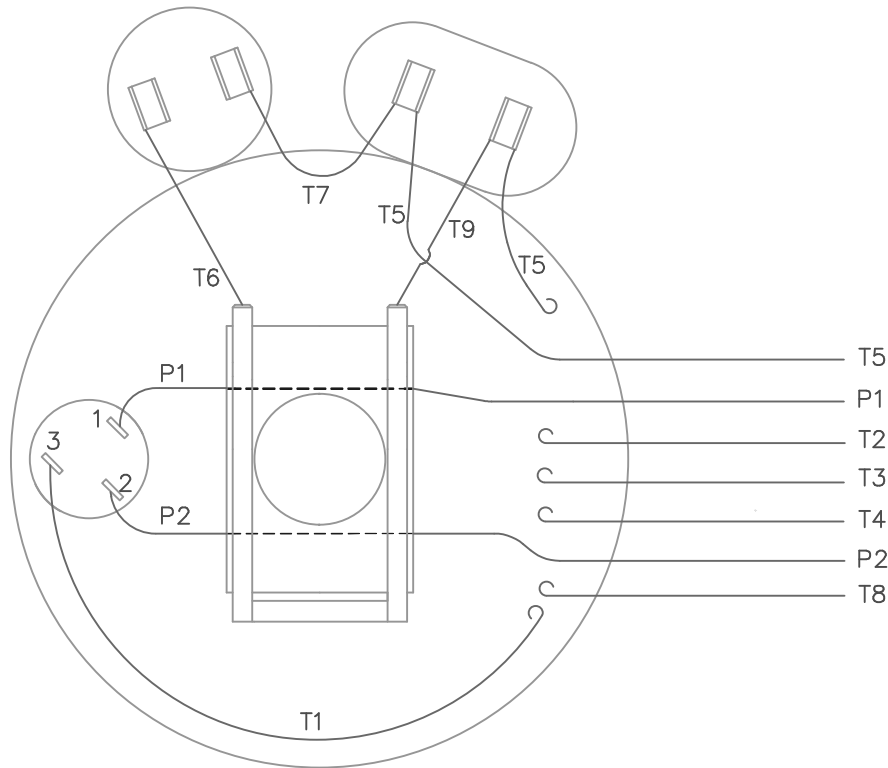
| DRAWING REVISION | REVISION BY | DATE |
|--|-------------|------|
| ECO ECO-0148826 | APPROVED BY | DATE |
| OUTLINE CONVERSION PROJECT | | |
| COPYRIGHT REGAL BELOIT AMERICA, INC. ALL RIGHTS RESERVED. PROPRIETARY AND CONFIDENTIAL INFORMATION - THIS DOCUMENT IS THE PROPERTY OF REGAL BELOIT AMERICA, INC. ("OWNER") AND CONTAINS OWNER'S PROPRIETARY INFORMATION. ANY PERSON, CORPORATION OR OTHER FIRM RECEIVING IT IS DEEMED, BY RECEIVING IT, TO AGREE THAT IT, AND/OR ANY PART OF IT, SHALL NOT BE DISCLOSED TO ANY PERSON, CORPORATION OR OTHER ENTITY, DUPLICATED, AND/OR USED, EXCEPT AS EXPRESSLY APPROVED IN WRITING IN ADVANCE BY OWNER. THIS DOCUMENT SHALL BE RETURNED TO OWNER UPON REQUEST. IT MAY BE SUBJECT TO CERTAIN RESTRICTIONS UNDER APPLICABLE EXPORT CONTROL LAWS AND REGULATIONS. | | |

| TOLERANCES UNLESS OTHERWISE SPECIFIED: |
|---|
| DEC. INCH mm ANGLE |
| .X ±0.1 [±2.5] ±0.5° |
| .XX ±0.03 [±0.76] |
| .XXX ±0.005 [±0.127] |
| .XXXX ±0.0005 [±0.0127] |
| REMOVE BURRS & BREAK SHARP EDGES: .003/.015 [.076/.381] X 45° |
| CORNER FILLETS: R.02 [.51] |
| MACHINED SURFACES: 125 3.2 INCH mm |
| mm SHOWN IN [BRACKETS] |

| |
|------------------------|
| DRAWN BY A. KEETHA |
| DATE 08/29/2016 |
| APPROVED BY PK |
| DATE 07/16/2018 |
| REFERENCE 607-0265 |
| THIRD ANGLE PROJECTION |

| | |
|----------------------------------|-------------------------|
| REGAL Regal Beloit America, Inc. | |
| DESCRIPTION | |
| OUTLINE | |
| 56H FRAME DRIP PROOF C-FACE | |
| MATERIAL | PROCESS/FINISH |
| SIZE B | DRAWING NUMBER 607-0375 |
| SHEET 1 OF 1 | |

VIEW FROM OUTSIDE OF MOTOR AT SWITCH END.



LINE LEADS

| | ROTATION FACING LEAD END | L1 | L2 | JOIN | INSULATE SEPARATELY |
|-----------|--------------------------------|----|-------------|-------------|------------------------|
| HIGH VOLT | C.C.W. | P1 | T4 T5 | T2,T3 T8 | P2 |
| | C.W. | P1 | T4 T8 | T2,T3 T5 | P2 |
| LOW VOLT | C.C.W. | P1 | T2,T4 T5 | P2,T3 T8 | --- |
| | C.W. | P1 | T2,T4 T8 | P2,T3 T5 | --- |

| | | | | | | | | | |
|-----|----------------|-----|----------|---|---------|-----------------------------|-------------------------|--------|-----------------------|
| | | | | TOLERANCES UNLESS OTHERWISE SPECIFIED | | LEESON ELECTRIC CORPORATION | | | |
| | | | | DECIMALS | | | | | |
| | | | | .00 | ± .01 | DRAWN JRW 09/26/74 | TITLE | | |
| | | | | .000 | ± .005 | CH'K'D. | EXTERNAL WIRING DIAGRAM | | |
| | | | | .0000 | ± .0005 | APPR. TEM | TYPE "K" W/PROTECTOR | | |
| 18 | REDRAWN ON CAD | DBT | 05/27/97 | FRACTIONS | ± 1/64 | SCALE 1=1 | MAT'L. DECAL 004011 | | |
| NO. | REVISION | BY | DATE | ANGLES | ± 1/2° | REF. 005004 | BRF | | |
| | | | | INCH/MM | | FMF W-K 6341 | FINISH | SIZE A | DRAWING NO. 005053-01 |
| | | | | THIS DRAWING IN DESIGN AND DETAIL IS OUR PROPERTY AND MUST NOT BE USED EXCEPT IN CONNECTION WITH OUR WORK ALL RIGHTS OF DESIGN AND INVENTION ARE RESERVED | | | | | |



CERTIFICATION DATA SHEET

**1051 CHEYENNE AVE.
GRAFTON, WI 53024
PH. 262-377-8810**

CONN. DIAGRAM: 005053.01

CATALOG #: E114214.00

OUTLINE: 607-0375-750C

MOUNTING: F1 ONLY

WINDING #: K632185 DR 3 A

TYPICAL MOTOR PERFORMANCE DATA

| HP | kW | SYNC. RPM | F.L. RPM | FRAME | ENCLOSURE | KVA CODE | DESIGN |
|-------|------|-----------|----------|-------|-----------|----------|--------|
| 1 1/2 | 1.12 | 3600 | 3450 | 56C | DP | J | L |

| PH | Hz | VOLTS | AMPS | START TYPE | DUTY | INSL | S.F. | AMB°C |
|----|----|---------|----------|-----------------|------------|------|------|-------|
| 1 | 60 | 115/230 | 12.2/6.1 | ACROSS THE LINE | CONTINUOUS | B4 | 1.15 | 40 |

| | | | | | | | | |
|-----------------------|------|----------------------|------|----------------------|------|-----------------|--|-------------------|
| FULL LOAD EFF: | 81.5 | 3/4 LOAD EFF: | 81.5 | 1/2 LOAD EFF: | 77.7 | GTD. EFF | | ELEC. TYPE |
| FULL LOAD PF: | 97.3 | 3/4 LOAD PF: | 97.6 | 1/2 LOAD PF: | 97.5 | 78.5 | | CAP START CAP RUN |

| F.L. TORQUE | LOCKED ROTOR AMPS | L.R. TORQUE | B.D. TORQUE | F.L. RISE°C |
|-------------|-------------------|--------------------|-------------------|-------------|
| 36.25 LB-FT | 87 / 43.5 | 106.51 LB-FT 294 % | 83.45 LB-FT 230 % | 22.6 |

| SOUND PRESSURE @ 3 FT. | SOUND POWER | ROTOR WK^2 | MAX. WK^2 | SAFE STALL TIME | STARTS / HOUR | APPROX. MOTOR WGT |
|------------------------|-------------|---------------|-----------|-----------------|---------------|-------------------|
| 0 dBA | 10 dBA | 0.047 LB-FT^2 | 0 LB-FT^2 | 0 SEC. | 0 | 38 LBS. |

***** SUPPLEMENTAL INFORMATION *****

| DE BRACKET TYPE | ODE BRACKET TYPE | MOUNT TYPE | ORIENTATION | SEVERE DUTY | HAZARDOUS LOCATION | DRIP COVER | SCREENS | PAINT |
|-----------------|------------------|------------|-------------|-------------|--------------------|------------|---------|--------------------------|
| C-FACE | STANDARD | RIGID | HORIZONTAL | FALSE | NONE | FALSE | NONE | GREEN - LEESON WATTSaver |

| BEARINGS | | GREASE | SHAFT TYPE | SPECIAL DE | SPECIAL ODE | SHAFT MATERIAL | FRAME MATERIAL |
|----------|------|------------|-------------|------------|-------------|--------------------------|----------------|
| DE | ODE | | | | | | |
| BALL | BALL | POLYREX EM | STANDARD 56 | NONE | NONE | 1144 STRESSPROOF (C-223) | ROLLED STEEL |
| 6203 | 6203 | | | | | | |

| THERMO-PROTECTORS | | | | THERMISTORS | CONTROL | SPACE HEATERS |
|-------------------|------------|----------|----------|-------------|---------|---------------|
| THERMOSTATS | PROTECTORS | WDG RTDs | BRG RTDs | | | |
| NONE | MANUAL | NONE | NONE | NONE | FALSE | NONE VOLTS |

*

N

O

T

E

S

INVERTER TORQUE: NONE
INV. HP SPEED RANGE: NONE

ENCODER: NONE
NONE NONE
NONE NONE PPR

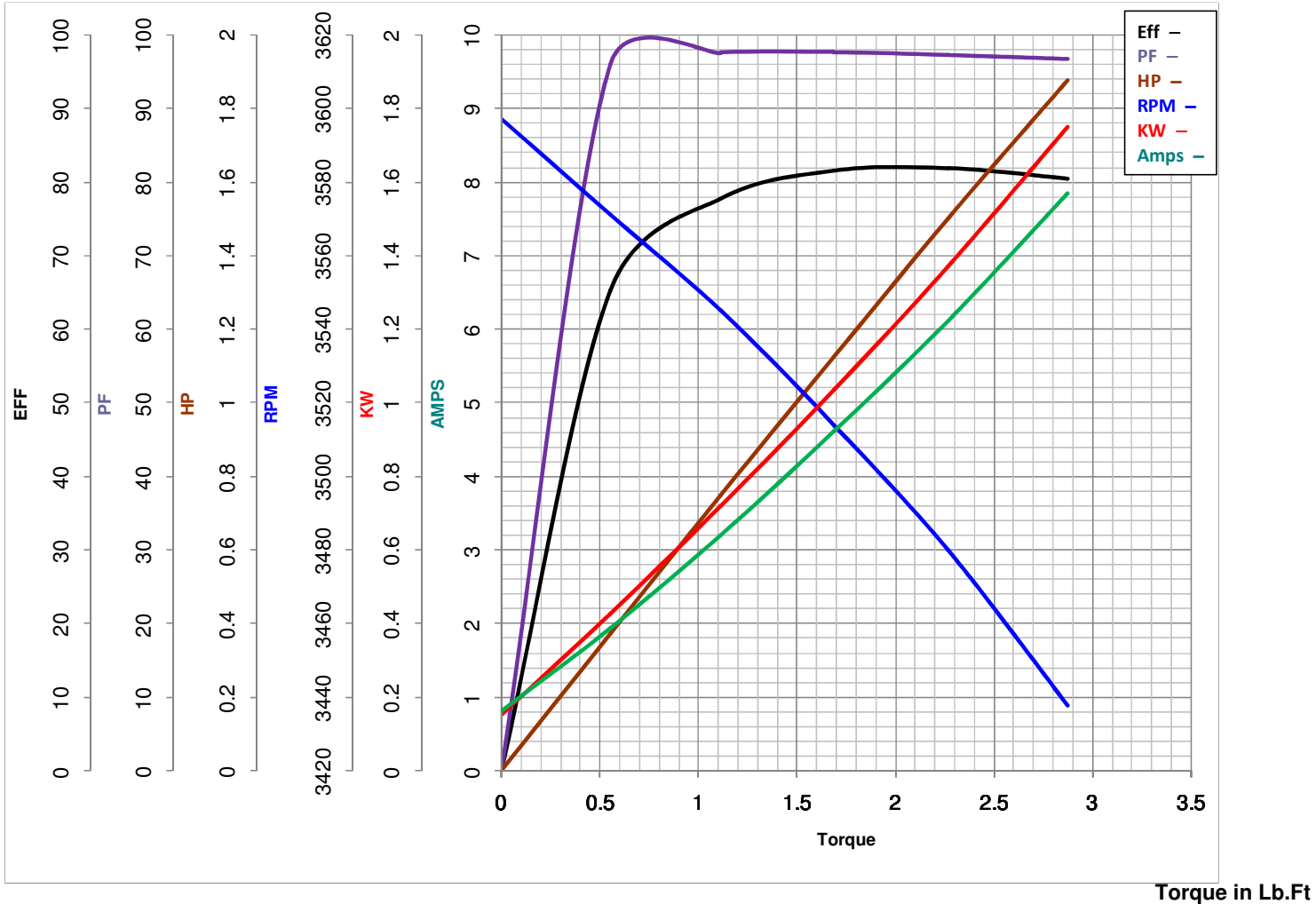
BRAKE: NONE NONE
NONE P/N NONE
NONE NONE
NONE FT-LB NONE V NONE Hz

Model No E114214.00Catalog No E114214.00

LEESON ELECTRIC CORPORATION

TYPICAL PERFORMANCE CURVE for AC MOTOR

 Curve at 230
60
1.5

 Volts
 HZ
 HP
HP 1.50PHASE 1VOLTS 115/230HZ 60RPM 3450
 FL TORQUE 2.266 Lb.Ft
 BD TORQUE 5.2 Lb.Ft
 LR TORQUE 6.657 Lb.Ft

WINDING K632185-3

 FL AMPS 12.2/6.1
 PU TORQUE 5.1 Lb.Ft
 LR AMPS 43.48
Date 3/27/2018